

Technical Data



eMirror



Contents

| | Page |
|--|----------|
| 1. eMirror system | 3 |
| 1.1. eMirror SET II / IV | 3 |
| 1.1.1. Dimensions | 3 |
| 1.2. eMirror SET LH II / IV RH II / IV / V | 4 |
| 1.2.1. Dimensions | 4 |
| 1.3. eMirror SET LH II / IV RH II / V | 5 |
| 1.3.1. Dimensions | 5 |
| 2. Technical Data | 6 |
| 2.1. Camera Unit | 6 |
| 2.2. Monitor 12,3" | 6 |
| 2.3. Wiring system | 7 |
| 2.4. General Data | 7 |

1. eMirror system

1.1. eMirror SET II / IV

Article number 30 00 000

System Description

Camera Monitor System according to regulation R46 for vehicles of categories M and N.

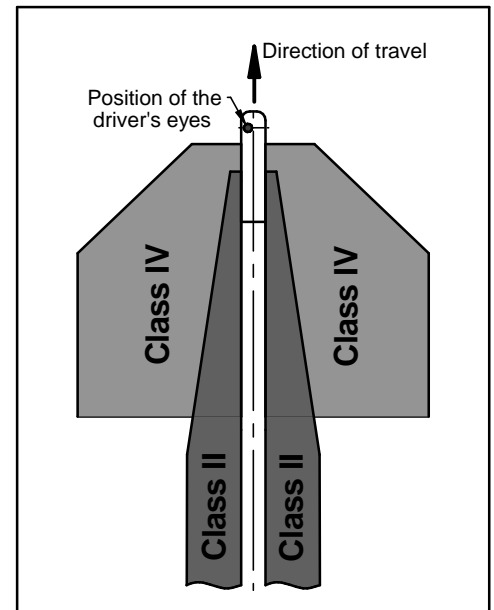
eMirror system has two camera-monitor units including:

- Exterior support with two heated cameras to meet specification of vision categories II and IV
- ECU unit
- Monitor 12,3"
- Wiring

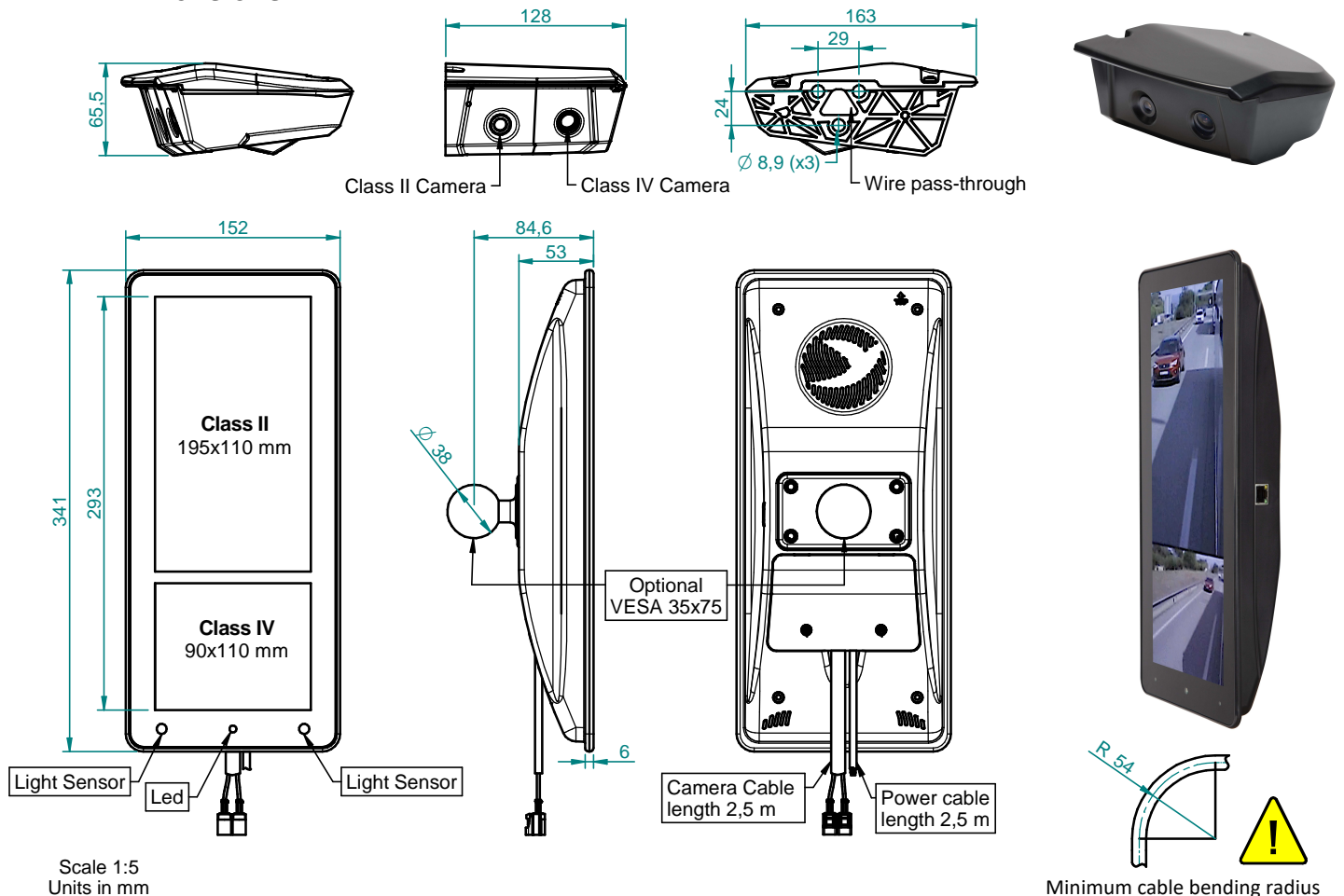
Check related documentation to know technical specifications and assembly instructions.

Features

Heated cameras to improve performance at low temperature, flickering effect of LED optimized, flatted image and low visual latency.



1.1.1 Dimensions



1.2. eMirror SET LH II / IV RH II / IV / V

Article number 30 00 002

System Description

Camera Monitor System according to regulation R46 for vehicles of categories M and N.

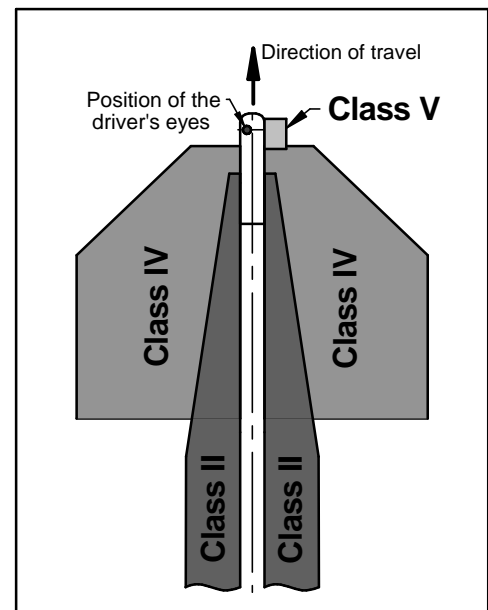
eMirror system has two camera-monitor units including:

- Exterior support with two heated cameras to meet specification of vision categories II and IV on the left side and three heated cameras to meet specification of vision categories II, IV and V on the right side
- ECU unit
- Monitor 12,3"
- Wiring

Check related documentation to know technical specifications and assembly instructions.

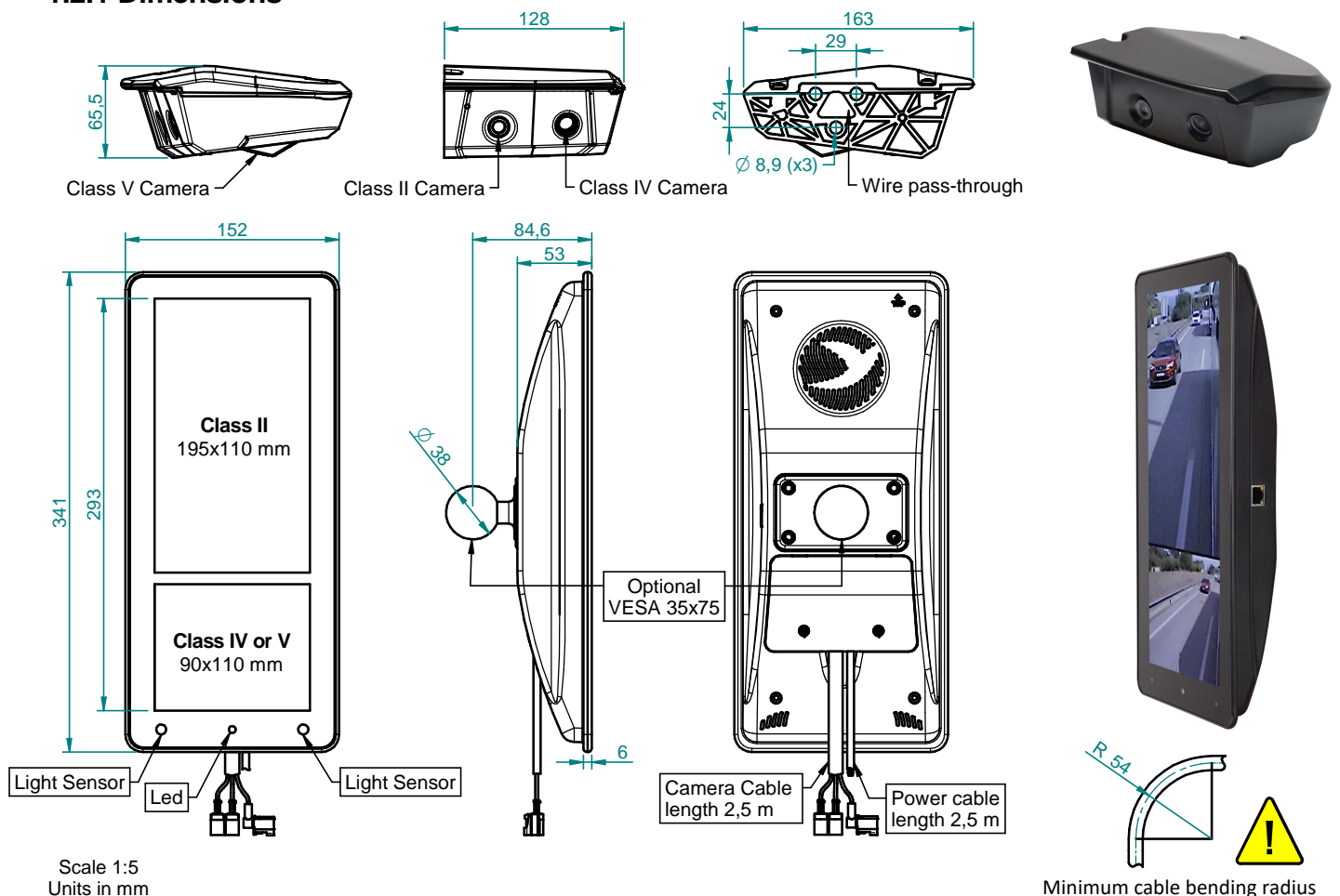
Features

Heated cameras to improve performance at low temperature, flickering effect of LED optimized, flatted image and low visual latency.



**Consult Industrial Arcol for the UK version of the eMirror system.*

1.2.1 Dimensions



1.3. eMirror SET LH II / IV RH II / V

Article number 30 00 004

System Description

Camera Monitor System according to regulation R46 for vehicles of categories M and N.

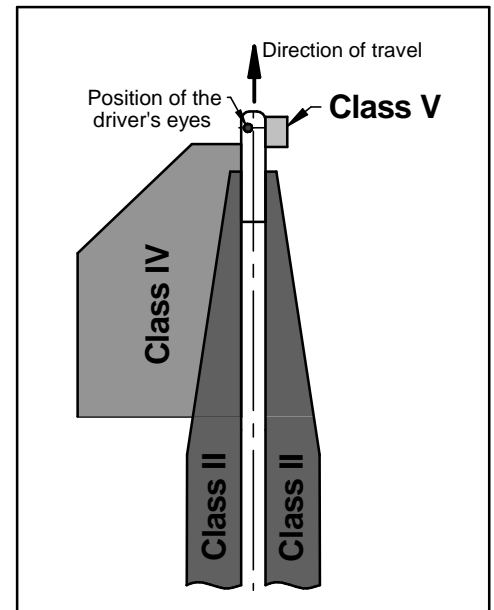
eMirror system has 2 camera-monitor units including:

- Exterior support with two heated cameras to meet specification of vision categories II and IV on the left side and two heated cameras to meet specification of vision categories II and V on the right side
- ECU unit
- Monitor 12,3"
- Wiring

Check related documentation to know technical specifications and assembly instructions.

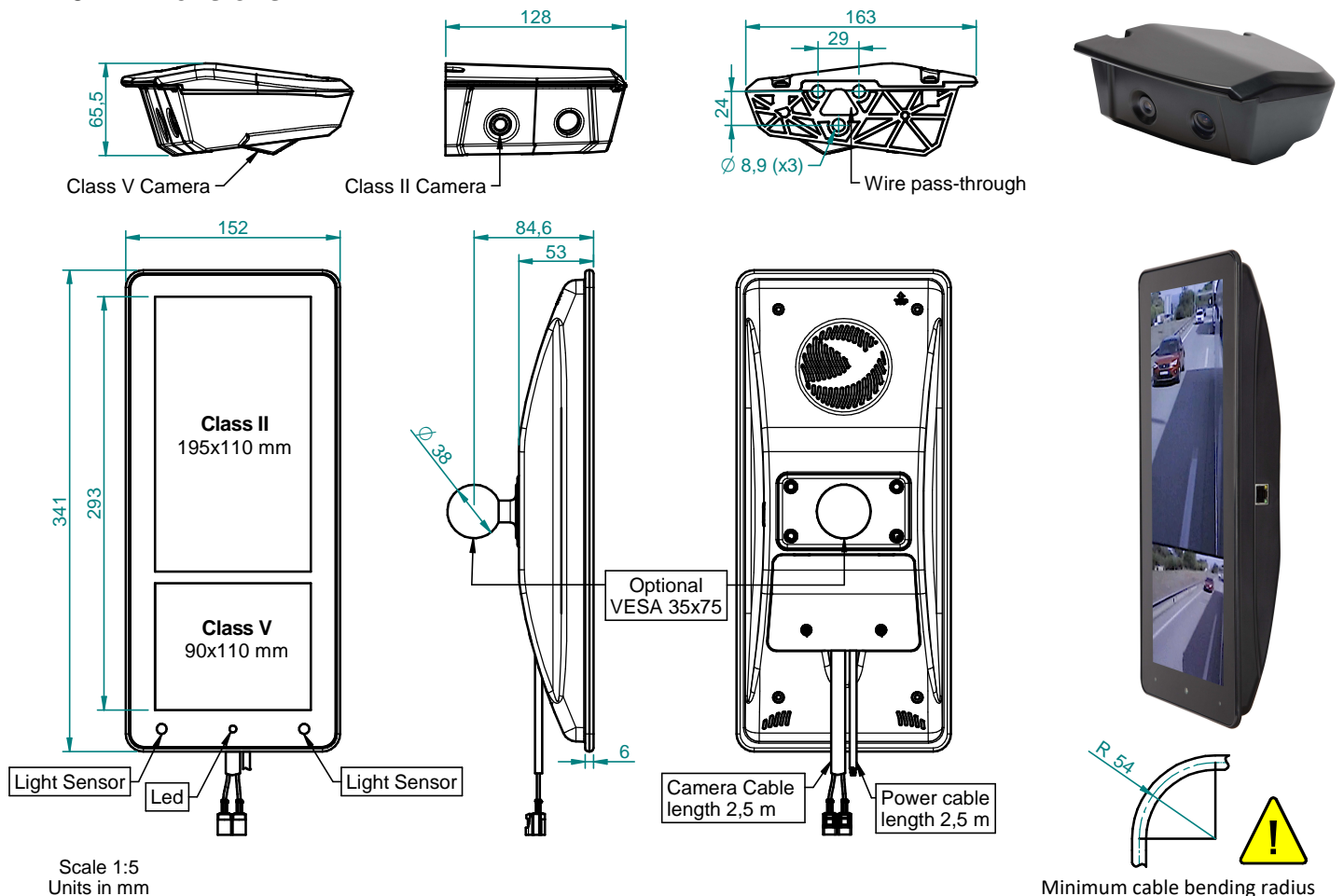
Features

Heated cameras to improve performance at low temperature, flickering effect of LED optimized, flatted image and low visual latency.



**Consult Industrial Arcol for the UK version of the eMirror system.*

1.3.1 Dimensions



2. Technical Data

2.1. Camera Unit

| | |
|-----------------------------|--|
| Article number | 30 00 201 II / IV LH 30 00 200 II / IV RH 30 00 204 II / IV / V RH 30 00 207 II / V RH |
| Camera module | Two heated cameras with performance to meet II, IV and V vision categories. |
| Video stream | Without compression through coaxial cable. |
| Power | Supply through coaxial cable. |
| Protection | Camera IP69K Lens: Waterproof Salt fog protection (IEC 60068-2-11) Anti-dust (ISO 20653) UV Anti-aging (ISO 4893-2-2013) |
| Optic | Class II H / V: 20,5° / 36° deg. / Class IV H / V: 69° / 62° deg. |
| Weight | 0,6 Kg |
| Operating temperature range | Between -40°C and 85°C |
| Storage | Storage temperature -40°C to 85°C |
| Maintenance | Use water and neutral soap to wash the camera. Do not clean with aggressive or abrasive cleaning agents. |



2.2. Monitor 12,3 "

| | |
|-----------------------------|--|
| Article number | 30 00 101 II / IV LH 30 00 100 II / IV RH 30 00 103 II / V RH 30 00 104 II / IV / V RH |
| Backlight | TFT LED |
| Luminance | Typ. 850cd/m2 |
| Contrast | 1500 |
| Surface Treatment | Anti-Reflective / Anti-Glare |
| Display module | 12,3" (diagonal) 720 x 1296 pixels for Cat. II 720 x 604 pixels for Cat. IV |
| Bracket | Optional: VESA Support 35x75 Check the different models of arms and lengths compatible with support. |
| Communication | High speed bi-directional over Coax cable, operational with active video channel. |
| Aspect ratio | Portrait 3:8 |
| Frame rate | Monitor: 60 fps max. System auto-adjust until 45 fps max. |
| Weight | 1,1 Kg |
| Operating temperature range | Between -40°C and 85°C |
| Storage | Storage Temperature -40°C to 85°C |
| Maintenance | Turn off the device prior cleaning. Use a damp cloth or non-abrasive wipe to avoid scratching the screen. Do not allow liquids to enter the unit. Avoid non-diluted bleach or ammonia solutions as these may cause discoloration. |



Technical Data

2.3. Wiring system

| | |
|----------------------|-----------------------|
| Item number for each | 30 00 400 II / IV |
| Camera-Monitor Unit: | 30 00 401 II / V |
| | 30 00 402 II / IV / V |

Electrical connections

Connection of the system to the vehicle with power and ground cables. It consists of two cables connecting the chamber, one for the heating system and one for the power supply.

| | |
|--------|---------|
| Weight | 0,48 kg |
| Lenght | 2,5 m |

2.4. General Data

| | |
|-------------------------------------|--|
| Color | Black |
| Voltage | DC 12V/24V |
| Operate Voltage | 10-28V |
| StandBy Mode Current | 100 µA |
| Power consumption (without heating) | Max. 40W |
| Power consumption (with heating) | Max. 56W |
| Inrush Current | 3200mA |
| Operating temperature range | Between -40°C and 85°C |
| Storage | Storage temperature -40°C to 85°C |
| Approval number | R46 : II E2*46R04*21278 ; IV E2*46R04*21279 ; V E2*46R04*22213 R10 : E9*10R06*22854 R118 : E9*118R03*1339 ; E9118R03*1237 |
| Product Warranty Period | 2 years limited warranty |
| RoHS compliance | Yes |
| REACH compliance | Yes |